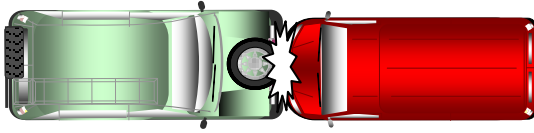
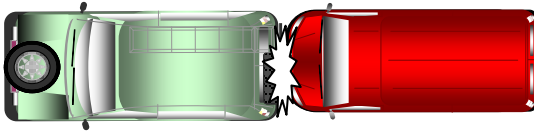


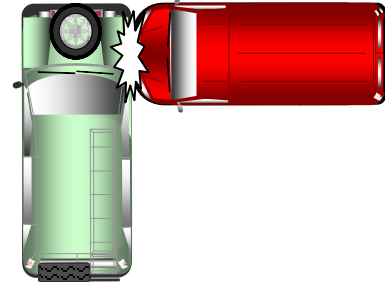
**TIPOS DE ACCIDENTES (COLISIONES, ATROPELLOS Y VUELCOS)**



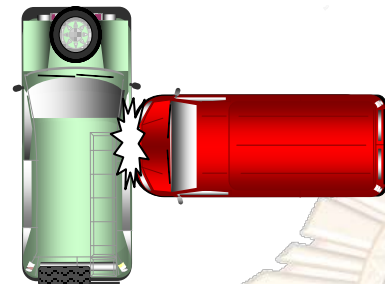
**Colisión frontal.**



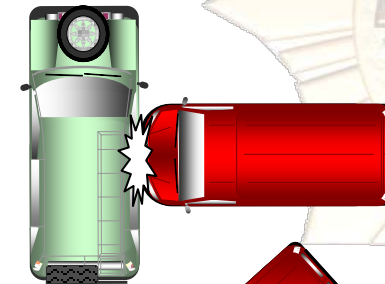
**Alcance.**



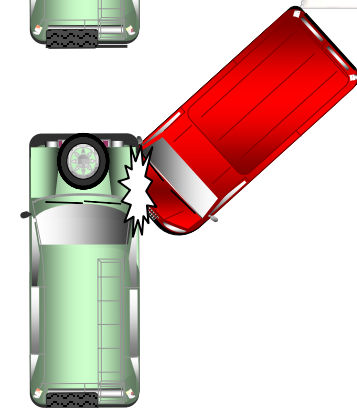
**Colisión lateral anterior.**



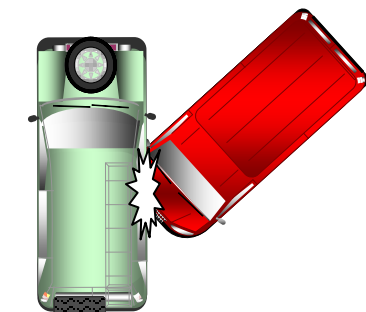
**Colisión lateral central.**



**Colisión lateral posterior.**



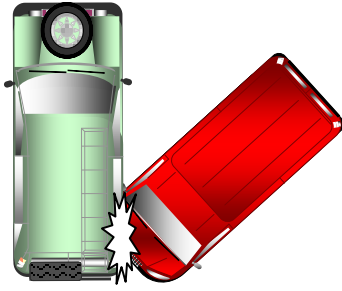
**Colisión angular anterior.**



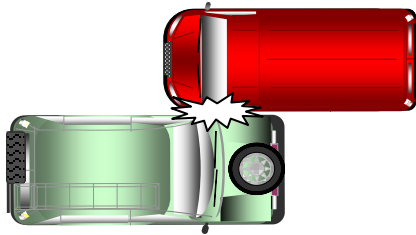
**Colisión angular central.**



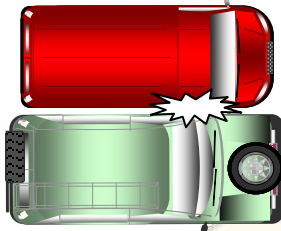
TIPOS DE ACCIDENTES (COLISIONES, ATROPELLOS Y VUELCO)



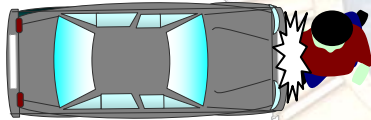
Colisión angular posterior.



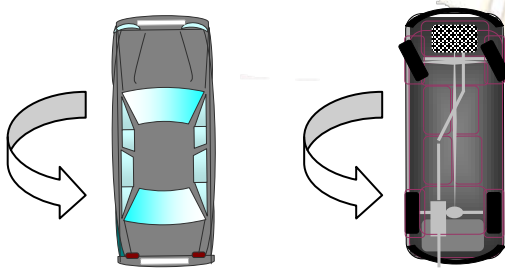
Raspado positivo



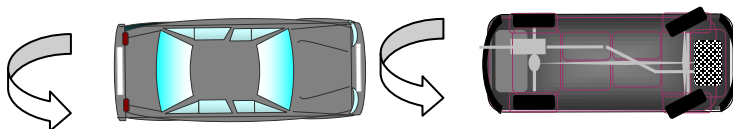
Raspado negativo.



Atropello.



Vuelco de tonel.



Vuelco campana.